



1. The headwaters of Rock Creek come primarily from an outfall that empties behind the Pathmark Supermarket upstream of the Cedarbrook Country Club.  
**Action/BMP** : Encourage shopping center management to consider several bioswales in the massive parking lot's impervious surface to treat NPS pollution and detain stormwater before discharge into Rock Creek.



2. As the stream exits the golf course it enters a pipe 100 feet from Limekiln Pike. Coming out on the south side of Ogontz Ave., the creek has a much greater volume and is severely polluted.  
**Action/BMP** : Continue to monitor the water quality. Encourage Golf course to participate in the Audubon Cooperative Sanctuary Program (ACSP).



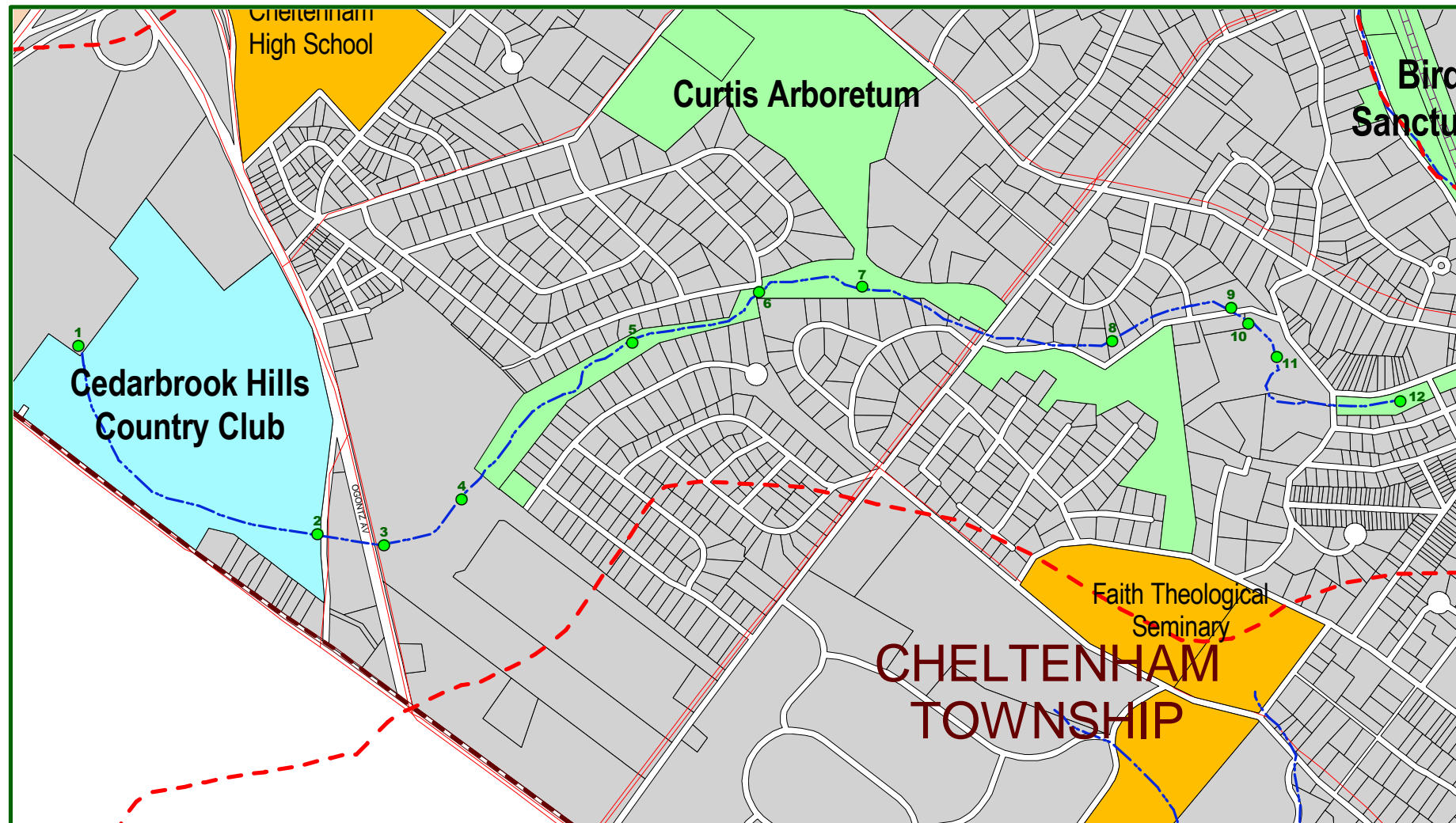
3. Philadelphia Water Department (PWD) storm sewer discharges into the Mill Creek under Greenwood Street. The PWD acknowledges the existence of a combined sewer overflow into the storm sewer. Odors exist from sewage and the sanitary sewage is apparent to the naked eye.  
**Action/BMP** : Continued PWD and township monitoring.

4. From Ogontz Avenue to the footbridge at the foot of Wistar Drive, the creek is very polluted. The creek has steep banks on both sides with extensive erosion. The east side is bounded by the Cheltenham Square Mall parking lot (the runoff of which contributes to the flooding of the stream) while Cedarbrook Middle School borders the creek on the west side. This entire reach of the stream has been used as an informal dump. A sanitary sewer pipe is buried under or alongside the creek.  
**Action/BMP** : Involve Cheltenham Square Mall and the Middle School in routine cleanups. Restore the riparian buffers that have eroded along the Mill Creek banks. Have Cedarbrook Middle School adopt the creek as a school project to monitor water quality and biological indicators.



5. The half-mile stretch of Rock Creek from the Wistar Drive footbridge to the Curtis Arboretum is owned and managed by Cheltenham Township and has the potential to be a wonderful beautiful wooded stream.  
**Action/BMP** : Develop routine community clean-up days. Consider a greenway or trail along Rock Creek, with Curtis Arboretum as a hub.

6. A side stream entering from Cedarbrook Middle School contains rust colored material (land use history of former landfill). Some of the houses on the western side of the creek have lawns mowed right up to the stream bank. Some residents have dumped leaves and other yard cuttings down the stream bank. In this reach small fish, frogs, and ducks swimming and feeding were observed.  
**Action/BMP** : Investigate and monitor rust colored discharge. Develop homeowner education program geared towards residents and the management of their land, especially in altering mowing close to the creek.



# Visual Streambank Assessment

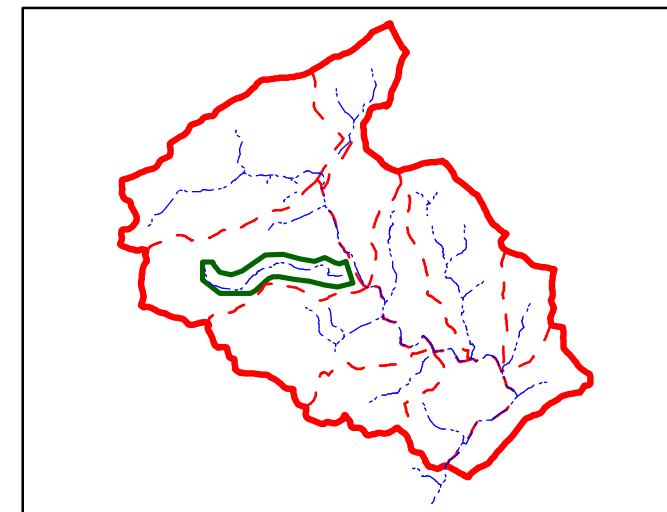
TOOKANY CREEK WATERSHED MANAGEMENT PLAN  
 Township of Cheltenham  
 Rock Creek Watershed

Assessed by the Tookany Creek Watershed Steering Committee Members

● Visual Assessment Point



500 0 500 Feet



Prepared By:



85 Old Dublin Pike  
 Doylestown, Pa 18901  
 215-345-7020  
 www.heritageconservancy.org

NAM Planning  
 & Design LLC

**DCNR** **DEP**  
 Funded in part by a grant from the Pennsylvania Department of Conservation and Natural Resources (DCNR) & the Pennsylvania Department of Environmental Protection (PA DEP).

7. From Lorimer Drive to Washington Lane, for 1/3 mile the creek forms the southern border of Curtis Arboretum. The flowing stream regenerates itself. A spring feeds two ornamental ponds in the Curtis Arboretum before emptying into the creek.  
**Action/BMP** : Stop mowing around the spring areas to allow for native vegetation to persist in the riparian buffer to filter the runoff from the surrounding areas.



8. For the next half mile from Washington Lane to the Rock Lane bridge, the stream flows through a wooded valley with the lightly traveled Rock Lane close on its southern bank.  
**Action/BMP** : No action necessary; continue to maintain the land uses surrounding this area.



9. Small fish (up to 6") frequent the pool under the Rock Lane Bridge. The channel is more stable and naturalized due to the vegetated stream banks.  
**Action/BMP** : No action necessary; continue to maintain the land uses surrounding this area.



10. Downstream of the Rock Lane Bridge, a stone wall tries to contain Rock Creek for the 200 yards that it flows through Camp Anglewood. During Hurricane Allison, the creek overflowed its banks and was about 2 feet above Rock Lane. A spring-fed side stream feeds a pond in Camp Anglewood before emptying into Rock Creek.  
**Action/BMP** : Remove channel wall and restore natural riparian buffer. Decrease mowing along the banks.



11. For the next 200 yards the stream is contained in a straight-sided concrete channel. Most of the land uses are residential and have mowed lawn up to the creek bank.  
**Action/BMP** : Consider removing the straight channel and restore the natural sinuosity and riparian buffer for improvement in water quality and bank stability.



12. The houses on the north side of the creek were demolished and Rock Creek channelized in the 1950's due of flooding. The township mows most of the property to the creek banks.  
**Action/BMP** : The township should develop a master plan for the ongoing management of this significant open space to treat NPS pollution and stormwater before it runs off into Rock Creek.



13. At Widener Road, Rock Creek is piped for the next 200 yards until it discharges into the Tookany Creek just below the Church Lane Bridge. Some of the land owners mow to the creek banks.  
**Action/BMP** : Consider day-lighting Rock Creek to restore the riparian buffer and the biological activity along this reach to improve the water quality. Develop landowner education program for land stewardship, especially mowing practices.